



TELFORD BULRUSH STAKE RACE

Saturday October 4th, 2025

Telford Lake, Leduc, AB

Dear Coaches,

We invite you to join us for the 2025 TELFORD BULRUSH STAKE RACE to be held on Telford Lake in Leduc, Alberta on Saturday October 4th, 2025.

The package contains important information about regatta procedures, race events, entry fees and deadlines. Should you have any questions or comments after reviewing the material, please do not hesitate to contact the Edmonton Rowing Club.

Contact for general enquiries:

- The club manager is Hannah Smith
- Email: hannahsmith@edmontonrowing.ca or info@edmontonrowing.ca
- Phone: (587) 587-5788
- Email is preferred, but phone calls might make sense in certain situations.

We look forward to seeing you in Leduc on race day!

Contact for Entry related questions:

Rob Swart (regattachair@edmontonrowing.ca) (780-932-1562), Regatta Chair.

Race Schedule

Boats will be released in the following orders for each flight, dependent on entries in each category:

		Boat Types
9:30 am Flight 1	U19/U23 Women Small Boats Novice Womens 4x U19/U23 Men Big Boats	1x, 2x, 2-4x 4x, 4-, 8+
11:00 am Flight 2	Open/Masters Men Big Boats Open/Masters Women Small Boats Novice Mens 8+	4x, 4-, 8+ 1x, 2x, 2-8+
Lunch		
2:00 pm Flight 3	U19/U23 Women Big Boats U19/U23 Men Small Boats Novice Womens 8+	4x, 4-, 8+ 1x, 2x, 2-8+
3:30 pm Flight 4	Open/Masters Men Small Boats Open/Masters Women Big Boats Novice Mens 4x	1x, 2x, 2-4x, 4-, 8+ 4x

Age Categories

The following age categories will be offered:

Men	Women
U19	U19
U23	U23
Open	Open
Master	Master
Novice	Novice

Regatta Schedule

Saturday, October 4

8:30am – Coaches Meeting

9:00am – Launch for Flight #1

9:30am – Start for Flight #1

10:30am – Launch for Flight #2

11:00am – Start for Flight #2

12:00pm – LUNCH

1:30pm – Launch for Flight #3

2:00pm – Start for Flight #3

3:00pm – Launch for Flight #4

3:30pm – Start for Flight #4

4:00pm – Awards for all events

Food & Drink

- There will be a lunch provided. Please let us know if any athletes or volunteers have any dietary restrictions by **Sept. 28th, 2025** so we can accommodate everyone.
- Nearest options for stores and food are around 4km away, which is around a 9 min drive.

Washrooms

There will be porta potties available on site, with handwashing stations.

Registration

2025 Registration Deadlines

Registration opens September 11, 2025

All entries must be received by midnight (CST) October 1, 2025

Individual athletes are restricted to two races total

Online Registration

All clubs and individuals apply for entries through *Regatta Central* (will update link here when available).

Final Draw

The Final Draw will be posted on Regatta Central Friday, October 3, 2025

Entry Fees - Per Athlete

\$65 - Racing Fee

Description: racing fee will include a lunch at the Telford Lake Boathouse.

Seat fees to be added after entries complete

TOTAL - \$65 + RCA Seat Fees (payable through Regatta Central)

Scratch Fees

See policy on Regatta Central site.

Late Entries

Late entries will be allowed if they do not overburden event numbers in the first or second flight and are approved by the Chief Umpire. Race fees will be \$75.00 plus applicable RCA Seat Fees for late entries and must be done at the coach's meeting. Payment must be provided prior to crew launching.

Crew Line Ups

All crew line ups must be provided on Regatta Central.

General Rules

RCA Rules of Racing apply.

Exception: There will be no weed protests.

Classifications

- U19 - Athletes who are under the age of 19 prior to December 31, 2025
- Novice - Athletes who have only been rowing since May 1, 2025
- U23 - Athletes who are under the age of 23 prior to December 31, 2025
- Senior - any athlete over the age of 23
- Master - any athlete over the age of 23. Athletes rowing in this category may not row both Senior and Master at the same regatta.

Weigh Ins

NO WEIGH INS.

Eligibility

All participants must be members in good standing with their provincial sport governing body and club body.

Course Map

[See Course Map, Warm up area, and flow patterns here.](#) Also attached on the following page.

Bow Numbers

These will be provided by the regatta organizers. Numbers must be affixed to boats with a bow clip. These must be returned to organizers following a race. A \$10 fee will be applied to crews who fail to comply with this request.

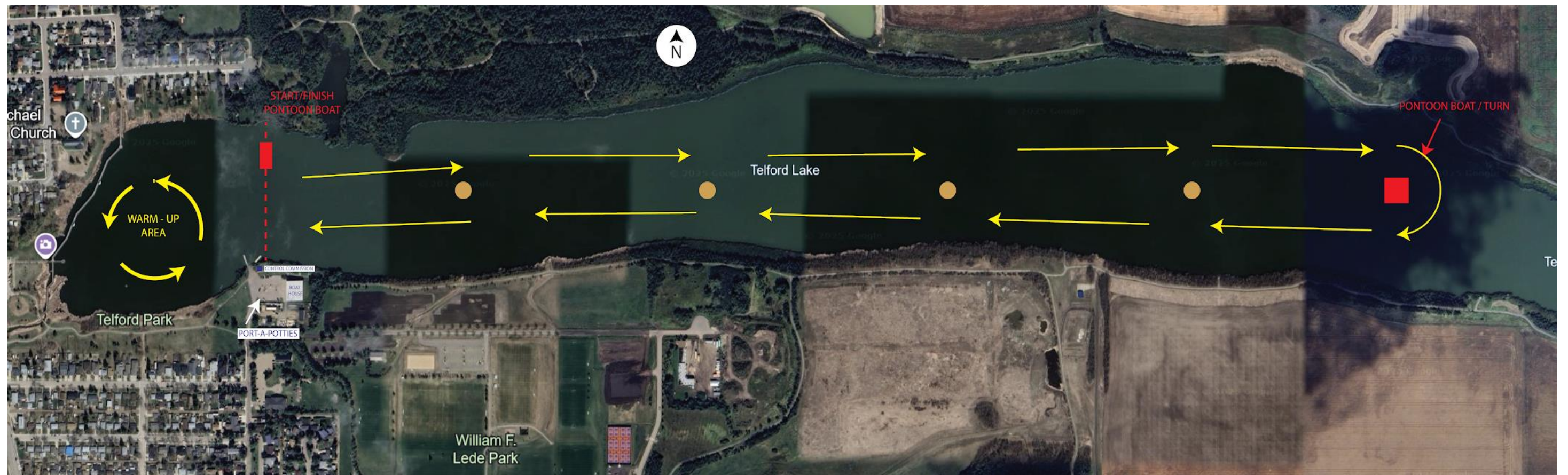
Seeding

In each flight, the order will be from largest boats to smallest boats. Organizers will do their best to seed crews in order to avoid any impeding actions by boats who are slower or faster than those ahead or behind them. Concerns about seeding must be brought forward as soon as possible after the release of the Final Draw. Failure to do so will result in no change to the seeding.

Coaches Meeting

It is expected that a representative from each club, at minimum, be in attendance at this meeting. Everyone who falls under the above titled categories are welcome to attend the meeting.

Failure to have a representative attend the meeting without prior communication with the LOC for reasons surrounding missing the meeting will result in a team penalty.



Telford Bulrush Stake Regatta: Race Course

Launching and Racing

Launching/Landing

- All crews must check in and check out with regatta control prior to launching (located to the east of the boat ramp and dock)
 - Quick release straps, secure bow balls, and secure bow clips are mandatory and will be checked here
- Dock marshals will direct crews as to the appropriate launch site on the dock.
- Boats must be launched with the bow ball facing the lake.
- Crews are asked to spend a minimal, but safe, amount of time on the dock when launching (avoid crew pep talks, last minute coaching, etc.)
- Crews will be directed by the dock marshal where to land post-race or for other reasons when landing
- Crews are asked to walk their shells as far up the dock as possible to maximize space for other crews to land
- Crews are asked to spend a minimal, but safe, amount of time on the dock when landing and getting equipment out of the water

Start Order and Commands

- Each crew is responsible for being on time for their event and in proper queue order according to bow number
- A boat that starts out of sequence against orders of the starter may be excluded
- If a crew has equipment failure or loses their bow marker prior to start, he/she/they should notify the marshals/officials as soon as possible. Race organizers will help resolve equipment issues where possible. Crews with issues that cannot be resolved will be held in a safe marshalling area until such time as it is safe to proceed with safety boat support to the finish line.
- Crews will then find themselves under the direction of the marshal who will advance crews towards the start line with appropriate intervals
- Close any gap that occurs between you and the crew ahead of you, until arriving even with the Marshal who will release you toward the Start Line at 10-15 second intervals i.e, “Bow # 11, name of crew... On the paddle”. Be attentive and ready to react to this instruction.
- Crews should cross the Start Line with a consistent gap both ahead and behind. The Starter will call “Go” when the crew crosses the start line and your race clock begins.

Racing

- When a passing crew closes to within one length of open water on the boat being overtaken, it is the responsibility of the slower boat to yield the line chosen by the passer in a timely manner. A crew failing to yield to a passer when there is adequate room and time to yield can/will incur interference penalties for failure to yield.
- A passing crew has the right to choose the side of their choice if and when a safe pass can be accomplished. The passer must allow sufficient room for both their boat and the boat overtaken to stay safely within the race course.
- If a pass is attempted, the passer shall not press the right to overtake to the point of severe collision. The actual severe collision incident may be caused by either a passer or passee.
- At the “stake”, there is a 10 meter NO PASS zone approaching the “stake” and following the “stake”.
- A severe collision is defined as one that causes damage to a boat, personal injury, the boat being overtaken is forced either off the race course or into a bridge, or a rower is struck by the oars/blades of another boat.
- After crossing the finish line, boats should immediately paddle to clear the finish line and await the finish of the race before returning to the launch area.
- Finish timing will be under the control of the Finish Judge on the land.

Cautions: Telford Lake

- The course is an out and back. Rowers will keep the buoys on the left (starboard side) at all times. [See course map section.](#)
- Crews travel for 2000 metres to the Pontoon Boat and large red buoy, then start to turn and head back down the lake for 2000 metres.

Infractions and Penalties

- Any boat demonstrating a blatant disregard for safety will be severely penalized, may be disqualified from the Regatta for the rest of the events of this regatta and may face sanctions for future regattas.
- Blatant disregard for the line of racing or umpires will automatically apply a minimum 30 second time penalty and may disqualify the crew in question from the event.
- Buoy infractions will be assessed at the umpire's discretion.

Parking and Arrival

- Trailers will be allowed to park in the grass lot directly west from the boat house.
- **Competitors are asked to use the parking lots at the Stone Barn Garden, Leduc Drama Society, and LA Crude Sports Club as well as 48 Avenue.**

- Umpires will be allowed to park in the parking lot at the Leduc Boat House.
- [See site map and parking map here.](#) Also, attached to the last page.

Race Updates and Results

- Results will be posted at the boathouse after each flight is completed and printed copies provided to the respective club coaches.
- Overall results will be posted on Regatta Central within 3 days of the end of the event

Safety

- Crews are responsible and accountable for directing their own course at all times
- As per RCA Rules of Racing -safety boats and umpires will only direct a crew during racing when a crew is in *imminent peril*. A crew is strongly advised to listen to the safety boats in these instances
- Emergency Response
 - All competitors will be directed to the on-site first aid staff
- Substantial Emergency
 - Dial 911
 - The nearest Emergency Room is:
 - Leduc Community Hospital
4210 48 Street, Leduc Alberta
- Extraction points for crews in distress along the race course are, but limited to:
 - Dock
 - Spot on east side of lake at 300 meter mark
- Regatta First Aid Plan
 - Events must be sanctioned by the Alberta Rowing Association and must adhere to the Safety Rules outlined in the RCA Rules of Racing Part 8, and in the approved sanction document.
- Roles and Responsibilities
 - Chief Umpire
 - Uphold the RCA Rules of Racing
 - Work with the LOC to ensure safe, fair, and enjoyable racing

- CU equipped with VHF radio for communicating with Safety Officer, Regatta Chair, and Umpires
- First Aid
 - Located in the Leduc Boat House First Aid Attendant: minimum certification: Basic First Aid and First Responder
 - On site at least 30 minutes prior to start of first race and 30 minutes after the last race of the day
 - Equipped with VHF radio for communicating with Safety Officer
- Safety Officer
 - On site when regatta course is open for racing
 - Equipped with VHF radio for communicating with First Aid, umpires and Regatta Chair Responsibilities
 - Monitor safety and flow patterns on the water. Notify Regatta Chair of any issues, adjust warmup course, location of marshals and safety boat drivers as necessary
 - Respond to any Safety issues that arise during the regatta, coordinate response with Chief Umpire
- Safety and Umpire Boats
 - Minimum of 4 safety boats on the water during racing.
 - Safety and umpire boats are equipped with: 10 PFDs, Safety kit (15m buoyant heaving line, first aid kit, flashlight, whistle), paddle, bailer (or pump)
 - All boats carry VHF radios, for communicating with the Safety Officer and Chief Umpire

Rules

1. Be on time for your race. Allow 20 minutes after launch to proceed to the start.
2. All boats must cross the start when instructed by the starter. Allow 10-15 seconds per boat. Starts will be by boat number sequence.
3. Boats missing the scheduled launch of their event (final call plus 5 minutes) will be assessed a 60 second penalty but may still be allowed to race when deemed safe to do so by the starting officials.

4. All boats must stay within the course. Each missed marker constitutes a 30 second penalty.
5. Boats proceeding to the start must stay clear of the course. Violation of traffic patterns or disregarding race official instructions are grounds for exclusion or a 60 second penalty.
6. Boats being overtaken must not interfere with the overtaking boat. Failure to give adequate way may result in disqualification or penalty.
7. All coxswained boats must cross the finish line with their coxswain.
8. ERC reserves the right to alter or shorten the racecourse to allow for inclement weather.

Site & Parking Map

Directions to Telford Lake



